



Farmington Public Schools

April 21, 2017

Wood Creek Elementary



Project Overview



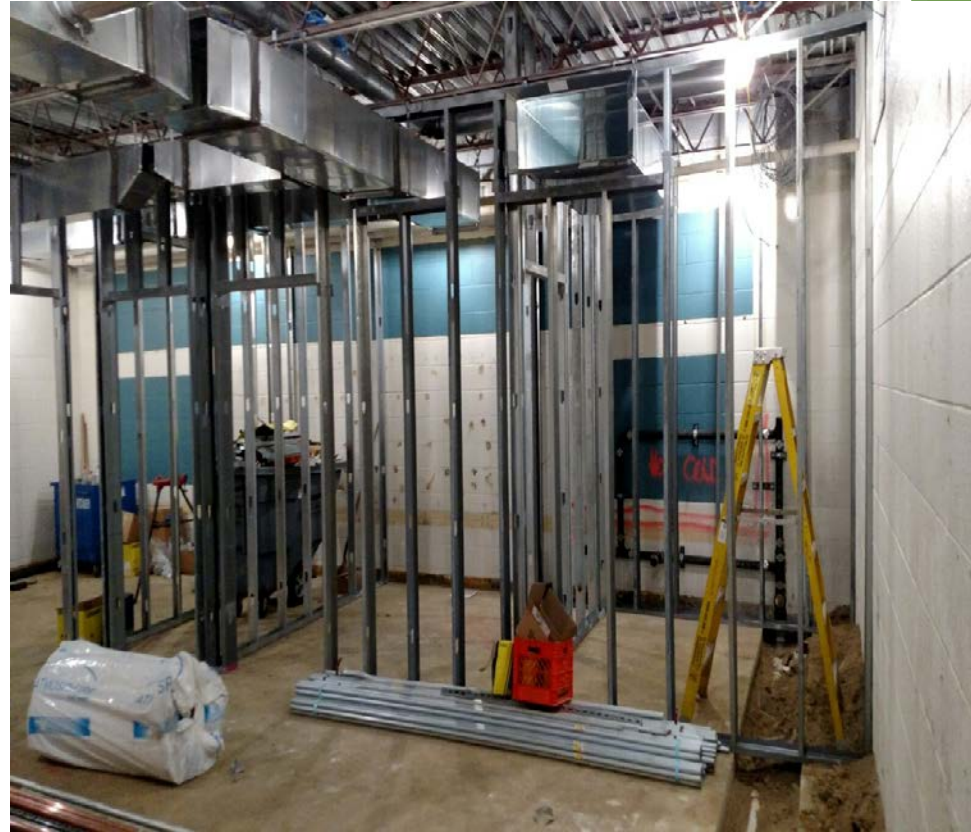
Starting the clearing of debris and concrete for the new secured front entrance at Wood Creek Elementary School.

Project Overview

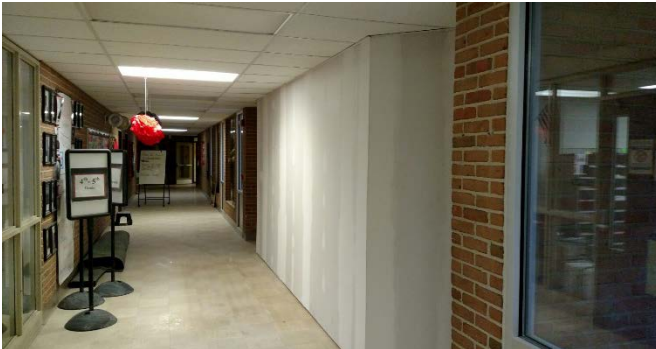


Temporary fence around the construction area of the new entrance.

Project Overview



The new Administration office completely demolished. Electrical, mechanical, plumbing and carpentry roughin has been completed in the new Administration office.



Project Overview

- Temporary door was installed to secure the construction site in the new administration office. Also a temporary wall was installed to close off the main entrance while the new construction takes place.

Project Overview



The new foundation for the new secure entrance with the bonding attached to it.

Project Overview



Pouring concrete for new footings and piers for new secure entrance.

Project Overview



Three new windows that were cut in for the new administration office.

Two Week Look Ahead

Week of April 24

- **Continue with the demolition on the front entrance.**
- **Continue with all trades rough ins in new administrative office.**
- **Plumbers to start installing 4" copper pipe into corridors.**
- **Electricians to finish Bulb and Ballast replacement in area B**

Week of May 1

- **Start laying burnished block for new secure entrance.**
- **Electricians to start working on new fire alarm system**
- **Plumbers to continue on over head copper pipe installation.**