

50th NATIONAL PTA
REFLECTIONS[®]
2018-2019



Reflections is a PTA sponsored program that encourages students to explore the arts for fun and recognition. This year is the 50th Anniversary of Reflections. Our entire community is participating. Wood Creek Students have won prizes and medals at the School level, District level, State level and National level.

To participate: **REFLECT** on the theme (*Heroes Around Me*). **CREATE** art. **BE RECOGNIZED!** Kindergarten through grade 5 students are encouraged to submit original works of art in any of the following categories:

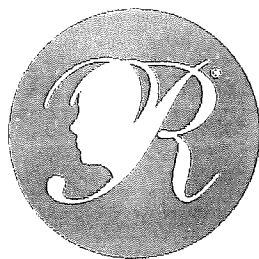
- Dance Choreography
- Film Production
- Literature
- Musical Composition
- Photography
- Visual Arts-2D & 3D

Students with disabilities may receive special accommodations by entering the special artist division.

Please turn over for rules, See the student entry form and.

Wood Creek DEADLINE: Submit Office by Friday, November 2, 2018

For details contact Daphne Joachim, daphnejoachim@aol.com



OFFICIAL RULES



Choose one or more categories below to submit original work that interprets the **2018-19 Reflections** theme: **Heroes Around Me**. Complete an entry form and submit along with artwork to the Wood Creek Main Office by Nov. 2, 2018.

Dance Choreography: Solo and ensemble works of all dance styles are accepted. Entrant must be the choreographer and may also be the performer, or one of the performers. If background music is used, cite it on the entry form. **Video** file must not exceed 5 min. and 1 GB in size. Accepted formats: AVI, FLV, WMV, MOV, MP4.

Film Production: Accepted short film styles include: Animation, narrative, documentary, experimental or media presentation. Use of PowerPoint is prohibited. Entrant must be the screenwriter, cinematographer, editor and producer. If background music is used, cite it on the entry form. **Video** file must not exceed 5 min. and 1 GB in size. Accepted formats: AVI, FLV, WMV, MOV, MP4.

Literature: Accepted forms of fiction and nonfiction include: Prose, poetry, reflective essay, screen play and play script, narrative, and short story. Entrants may write in their primary language as long as an interpretive English translation is also attached. Use of copyrighted material is prohibited. **Writing** must not exceed 2,000 words and may be handwritten or typed. Accepted formats: Single-sided print on 8 ½x11" paper, PDF file.

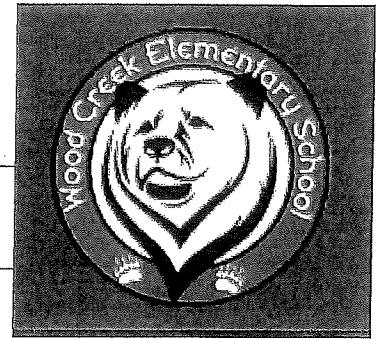
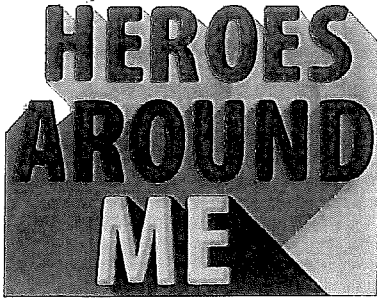
Music Composition: All music styles and combinations of instrumentation are accepted. Entrant must be the composer and may also be the performer, or one of the performers. Use of copyrighted material is prohibited. **Audio** file must not exceed 5 min. and 1 GB in size. Accepted formats: MP3, WMA, WAV, ACC, FLAC. **Notation** (score/tabulature) in PDF format is only required for middle and high school divisions.

Photography: Photo must be a single print/digital image. Collages and collections of photos are not accepted. Entrant must be the photographer and may use a variety of digital editing techniques including but not limited to, multiple exposure, negative sandwich and photogram. Use of copyrighted material is prohibited. **Print** image dimensions must be no smaller than 3x5 inches and no larger than 8x10 inches. Accepted print formats: Mounted on mat or poster board no larger than 11x14 inches. Framed prints are not accepted. **Digital** image dimensions must be at least 640x960 (pixels) and 300 dpi (resolution). Accepted file formats: JPEG, JPG, GIF, PNG.

Visual Arts: Works of both fine and design arts are accepted, including but not limited to: architectural drawing and models, ceramics, collage, computer generated images and graphics, crafts, drawing, fashion clothes and jewelry, fiber work, mixed media, painting, printmaking and sculpture. Use of copyrighted material is prohibited. (This means no Superman or name brand logos.) **2D** artworks must be mounted on sturdy material and no larger than 24x30 inches with matting. Framed entries are not accepted. Include one digital image of artwork with your submission. **3D** artwork submissions must contain 3 digital images of artwork at different angles. Image(s) are used for artwork identification, judging and exhibition purposes.



Students who identify as having a disability and may receive services under IDEA or ADA: Section 504 may enter in the Special Artist Division or grade division most closely aligned to their functional abilities. The **Special Artist Division** welcomes all grades and all abilities and offers non-artistic accommodations (e.g. adaptive technology; transcribing; holding a camera) for students to participate fully in PTA Reflections. Student assistants must refrain from being involved in the artistic process (e.g. developing an artist statement, choreography, music lyrics, storyboards, etc. Student recognition and awards are announced as part of the Special Artist Division.



ENTRY FORM

Submit to Office by Nov 2, 2018

STUDENT NAME _____ GRADE _____ TEACHER _____

GRADE DIVISION *(Check One)*

- PRIMARY (Preschool- Grade 2)
- INTERMEDIATE (Grades 3-5)
- SPECIAL ARTIST (All Grades)

ARTS CATEGORY *(Check One)*

- DANCE CHOREOGRAPHY
- FILM PRODUCTION
- LITERATURE
- MUSIC COMPOSITION
- PHOTOGRAPHY
- VISUAL ARTS

TITLE OF ARTWORK *(do not use Heroes Around Me)*

ARTWORK DETAILS (Dance/Film: cite background music; Music: musician(s)/instrumentation; Literature: word count; Photo/Visual Arts: materials & dimensions) _____

ARTIST STATEMENT (Must be 10 to 100 words describing how your work relates to the theme. This is important in judging)

