

UpDate

Farmington Public Schools' Quarterly News Update

District issues survey to gather feedback from parents and community members

Every five years, Farmington Public Schools issues a formal customer satisfaction survey to receive feedback

from parents and community members on how the District is doing. This year's survey will be launched the week of November 30. Results will be presented to the Board of Education at one of their meetings held in January 2012 and then shared throughout the district.

"These are challenging times, and insight from the community will help strengthen the planning and budget decisions we face," said Susan Zurvalec, Farmington Public Schools' Superin-

tendent. "We ask that the community help guide these decisions to make Farmington Public Schools an even better district for our community and our children."

The survey will be distributed to a random sample of 1,500 residents. They should start receiving them around November 30.

"We ask that everyone who receives a survey takes a few minutes to fill it out and send it back," Zurvalec contin-

ued. "For those who do not receive the random survey, they can take the survey online."

Those who wish to participate but do not receive a survey can do so by going to www.cobaltcommunityresearch.org/FPS. Under survey ID, they can type in "FPS" in all caps. The online survey will open the first

continued on page 4



School Board Election Results

Election results from November 8, 2011

Incumbents Karen Bolsen and Howard Wallach won the two six-year terms ending December 2017; Murray Kahn won the four-year term ending December 2015 and George Gurrola won the partial term (four years) ending December 2015.

Karen L. Bolsen is currently the Vice President of the Board. She was elected in 2003 and reelected in 2007 and 2011. A graduate of Farmington Public Schools, she also earned a B.A. degree from Michigan State University and an M.B.A. from the University of Detroit. Karen serves on numerous community committees. She has been a member of the Multicultural Multiracial Com-

munity Council for 17 years, serving as chair for 16. She also serves on the Commission on Children, Youth, and Families and the Crime Prevention Advisory Committee. Karen and her husband have three daughters; one attending Michigan State University, one an alumna of Michigan State University, and the eldest an alumna of Oakland University. All three graduated from North Farmington High School. Karen is a lifetime resident. Karen's term expires in 2017.

Howard I. Wallach is currently a trustee. Howard was appointed in March 2004, elected in June 2004 and then reelected in 2006 and

2011. He is a partner in the Ferndale office of the national law firm of Foley and Mansfield, P.L.L.P. Howard has been very active in the community, most recently serving as Chair of the Michigan Regional Board of the Anti-Defamation League. Howard and his wife have lived in the District for 20 years. They have two daughters; one who is a 2011 graduate of Michigan State University and one who is a graduate of the American Musical and Dramatic Academy. Howard's term expires in 2017

George E. Gurrola is the only candidate who filed to complete the unexpired term of former board member Gary Sharp. (Appointee Timothy Devine, who held the seat, did not run for the open seat.)

Continued on page 3



Pledge for Success 2
Board of Education Meeting Dates 3
Positive Behavior Intervention Support (PBIS) 3

Proficiency on state-required test. 3
FAAPN Meeting Dates 3
Celebrate Kwanzaa 3
Education Executive 4



Teacher and Administrator Evaluations 4
Zangle/Parent Connect 5
Awards and Achievements 5
Save the Date 5

PTA Meeting Dates 6
Battle of the Middles 6
Financial Update. 6 - 7
Nutrition Services information 7
Senior Adult Extraordinaire. 8

Positive Behavior Intervention Support (PBIS)

Board of Education Meeting Dates

2011

December 6

2012

January 10	April 24
January 24	May 8
February 7	May 29*
February 21	June 12
March 6	June 19
March 20	July 24
April 10	August 21

All meetings will begin at 7:30 p.m. and will be held at the Lewis Schulman Administrative Center located at 32500 Shiawassee Street, Farmington.

*Meeting will be held at North Farmington High School, 32900 W. Thirteen Mile Road, Farmington Hills.



Make payments online!

Farmington Public Schools offers an online payment processing system, Parent Connect.

This program allows you to make school-related payments online via e-check or credit card at your convenience all from the District's web site.

The District is currently accepting online payments for the following items:

- Lunch Program
- Preschool Tuition
- Pay to Participate - Athletic Fee
- Pay to Participate - Activity Fee

For more information, visit www.farmington.k12.mi.us. New options will be added as the year progresses.



Positive Behavior Intervention Supports (PBIS) is a system designed to 1) explicitly teach expected behavior and 2) foster relationships and connections among all within the Farmington Family. There is a significant connection between a student's academic success and behavioral success. Prerequisite skills to maintain engagement with tasks, follow classroom expectations and cooperate and work together with peers are critical for student achievement and career success. The majority of individuals fired from their jobs were fired for behavior reasons and not academic skill deficits. A measure of a school district's effectiveness can be how well does it meet the needs of its students? How flexible are Farmington Public Schools to the skills required for our students to achieve our high expectations? We are required to teach the skills that will make our students successful. Therefore, we must explicitly teach behavior skills! PBIS is our means to do this.

PBIS is the nut and bolts action steps needed to achieve the Farmington Public Schools' desired culture and

bridge the gap from being a lofty goal to an achievable reality.

Defining features of PBIS include:

- Teach behavior expectations
- Proactive, team-based approach
- Emphasis is placed on prevention
- Data-based problem solving
- Increases the capacity of schools to educate all students
- Research-based
- School wide, classroom and individualized based

Where is PBIS within Farmington Public Schools?

The District is in year two of a five-year implementation process of PBIS. Work continues at each school to further PBIS implementation and sustainability. Two major District-wide PBIS workgroups are beginning during the current school year:

1. Behavior Screeners Work-group - will recommend what universal

Power Upper Elementary School - PBIS

Reinforce our POWER P.R.I.D.E. Power Pride acronym is language we use throughout our day at Power.

- P – Pride**
- O – Offer Respect**
- W – Work Together**
- E – Exercise Effort**
- R – Reasonable and Responsible Choices**

Students should ask themselves if the decisions they make throughout the day reflect these values.

- screeners (assessment tools) we will use across the District to identify targeted behavior patterns requiring more intensive instruction.
2. Behavior Interventions Workgroup - will recommend evidence-based behavior interventions to teach expected behavior.

So what does PBIS look like at each school?

Each school already has or is working to identify and develop:

- a matrix defining their behavioral expectations
- their system to explicitly teach behavioral expectations
- a common language related to the school's behavioral expectations
- a system to assess and identify which students need pre- and re-teaching of behavioral expectations
- a system to acknowledge and reinforce appropriate behavior

Warner and Power Upper Elementary Schools Positive Behavior Intervention Support models.



Warner Upper Elementary School - PBIS

The Warner Way was established through our PBIS (Positive Behavior Intervention Support) model. Every student at Warner received a Warner Way bracelet on the first day of school and have been learning and celebrating the Warner Way encourages all students to be safe, respectful and responsible.

Way ever since. The Vikings wear their Warner Way bracelets proudly each day. The Warner Way encourages all students to be safe, respectful and responsible.

Pledge for Success

Join the coalition of educators, public institutions, businesses, community organizations and others in establishing Farmington/Farmington Hills as the hub of educational opportunities in metro Detroit.

The Pledge for Success coalition encourages all citizens to attain a strong academic foundation for their personal success and the success of the entire community. The coalition will take charge by helping citizens reach their educational goals by helping them to find information on resources to plan, and pay for education, host education-related programs for preschool, K-12, and beyond and by encouraging local businesses or agencies to provide work-based learning opportunities.

The Second Annual Eighth Grade Success Program will be held Thursday, March 1, from 6 - 8:45 p.m. at

Oakland Community College Orchard Ridge Campus (J Building), 27055 Orchard Lake Road, Farmington Hills.

This special program is designed to prepare eighth grade students and their parents for high school and beyond. The Pledge for Success program will include: a resource fair, celebrity speakers, raffle prizes and great information for students and their families.

Join the Pledge Adopters. You can be a part of the Pledge for Success by presenting or attending a workshop, creating a work-based learning opportunity or by taking the Pledge. Visit www.pledgeforsuccess.org to find out more about The Pledge for Success.

Learning together. Living together. Succeeding together.
That's what the Pledge for Success is all about.

SAVE THE DATE

**Pledge for Success
Eighth Grade
Success Program**

Thursday • March 1, 2012



Photo provided by: Joni Hubred-Golden/
farmington-mi.patch.com



www.pledgeforsuccess.org

“Proficiency” on state-required tests has new definition

Farmington Public Schools is taking a proactive approach to communicating with parents and the community concerning scoring changes to the Michigan Educational Assessment Program (MEAP) and Michigan Merit Exam (MME) tests this year.

Each year, Farmington Public Schools’ students, along with all other Michigan public school students in grades 3-9, are required to take the MEAP and eleventh graders are required to take the MME. If you haven’t already, you will soon begin hearing news reports about new cutoff scores, or “cut scores” that the Michigan State Board of Education recently adopted for these tests. Rather than rely on the news media, we encourage parents to use Farmington Public Schools and the Michigan Department of Education for the most accurate and current information.

So, what are cut scores and why has the Michigan State Board of Education changed them? MEAP and MME cut scores separate test takers into various categories, such as advanced, proficient, partially proficient and not proficient. Michigan’s previous cut scores for these state tests were set at a very basic level. Raising the cut scores will give Michigan parents and students a much better sense of whether they are adequately prepared for the next step in their education and a future career in a global economy.

The new cut scores represent a significantly higher standard for student achievement and are intended to more accurately reflect a student’s progress toward college and career readiness. On some tests, students previously could have answered as few as 40 percent of the questions correctly to be considered proficient. Under the new scoring system, students will have to correctly answer a

much higher percentage of questions. Michigan is one of only three states in the nation (along with New York and Tennessee) to move to this top tier level of test scoring.

Like school districts across the state, Farmington Public Schools’ MEAP and MME proficiency results are expected to decline when publicly released next spring. While we anticipate an initial drop in the number of students reported as “proficient,” we are confident this change will be temporary due to ongoing school improvement efforts and student support.

If a student is reported as “not proficient,” it does not mean that he

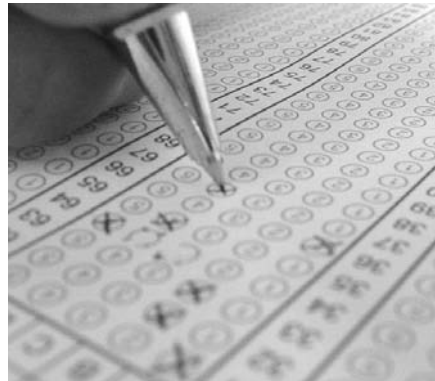
or she isn’t gaining academic skills or knowledge expected for his or her grade level. It means that on the day of the test, this student was not yet proficient on the material being tested. Many students may require additional help and/or time to master these skills. Actually, by the time parents and the schools receive the MEAP/MME results from the state, many students identified as “not proficient” will have closed the gap.

The MEAP and MME tests are only two of several measures used in our district throughout the year to insure that students are making academic progress. We maintain high standards for our students and their test scores are consistently among the highest in the state. We anticipate this trend will continue even with the new cut scores.

We will be examining our curriculum to respond to this more challenging level of test scoring. In addition, our staff will focus our professional development efforts on enhancing our abilities to rise to the challenge presented to these recent changes.

Undoubtedly, parents will have many questions about the scoring changes. We will continue to provide information through a variety of communication channels such as newsletters, e-mail, our web site, parent-teacher conferences, and more.

For more information, contact Kris Gekiere, Director of Assessment and School Improvement, at 248.489.3402 or visit www.oaisd.org/statetests or <http://1.usa.gov/statetests>.



...Michigan is one of only three states in the nation (along with New York and Tennessee) to move to this top tier level of test scoring.

Election Results

continued from page 1

Gurrola spent much of his career working for state and local governments on bond issues and is now a tax law specialist with the Internal Revenue Service. He recently served on the District’s Facilities Study Committee.

George and his wife reside in Farmington Hills and have three children in the school district. Gurrola’s term will expire in 2015.

Murray J. Kahn was elected for the four year term ending in December



*Karen Bolsen
Vice President*



*Howard Wallach
Trustee*



*George Gurrola
Trustee*



*Murray Kahn
Trustee*

2015. Kahn has lived in Farmington Hills for 27 years with his wife Susan. They have three children, all whom graduated from Farmington Public Schools.

Murray is a graduate of The Ohio College of Podiatric Medicine and

Oakland University. He is currently the Division Head of Podiatry at Henry Ford Health System.

Gurrola was sworn in at the November 15 Board of Education meeting and Bolsen, Wallach and Kahn will be sworn in at the January 10 Board meeting.

Farmington African American Parent Network

(FAAPN)

**Meeting Dates
2011-2012**

All FAAPN meetings are held at the Harrison High School Media Center and begin at 7 p.m.

Harrison High School is located at 29995 W. 12 Mile Road, Farmington Hills.

* Monday, January 9

* Monday, February 13

* Monday, March 12 - Student Forum (in the HHS Auditorium)

* Monday, April 16

* Monday, May 14

African American Family Network of Farmington/Farmington Hills Presents

Celebrate Kwanzaa

Sunday, December 4, 2011
2 - 4 p.m.

Farmington Community Main Library - Auditorium
32737 W. Twelve Mile Road
(between Orchard Lake Rd. and Farmington Rd.)

FREE ADMISSION

“Celebrate Kwanzaa” is an event for the entire family. Kwanzaa is an African American celebration, however all cultures can benefit from the seven Kwanzaa principles. All are invited to attend this evening of fun-filled entertainment and food to learn how to celebrate Kwanzaa.

For more information, contact Douglas & Ouley Saulsberry at 248.737.3023 or oudr@aol.com

Farmington
PUBLIC SCHOOLS



Education executive magazine features Farmington Public Schools

Farmington Public Schools was recently one of the spotlighted school districts in the Fall Edition of Education executive magazine. The article highlights some of the District's challenges and achievements.

Superintendent Susan Zurvalec was interviewed about the District and her quote sums up the attitude the District has taken when faced with the many changes the District has seen.

"We are maintaining educational excellence and instructional programs by looking for collaborative solutions that can help us prepare our students while still be fiscally responsible, providing the highest quality learning experience for all students is our commitment."

Through forward thinking, the District not only continues to meet the challenges of the current climate but continues to add programs and increase opportunities for students.



District issues survey to gather feedback from parents and community members

continued from page 1

full week in December. The surveys will officially close on December 21. The Survey is being offered in the following languages: English, Arabic, Albanian, Hindi, Japanese and Spanish.

It is important to note that the identity of citizens will not be tied to the results.

"Confidentiality is an important part of this study," said Zurvalec. "We want the community to be comfortable sharing both the good and the bad without worrying that we'll know who said what."

The study is part of a non-profit program called the Cobalt School Engagement and Priority Assessment. It gives local schools solid community-

based data to support resource decisions, improve services, measure progress, and build public trust. Because the assessment is a trusted independent assessment, the credibility of the data is solid.

The assessment is powered by the patented technology of the American Customer Satisfaction Indexsm (theACSI.org), the well-respected standard of customer satisfaction metrics for both government and the private sector. The ACSI measures more than two-thirds of the United States economy and produces scores for more than 100 federal government agencies.

This tool is a combined effort of the nonprofit Cobalt Community

Research and the CFI Group, who developed the technology behind the ACSI. Cobalt Community Research (www.cobaltcommunityresearch.org) is a 501c3 nonprofit organization with a mission to provide research and educational tools that help local governments, schools and other nonprofit organizations thrive as changes emerge in the economic, demographic and social landscape. Cobalt is located in Lansing, MI. CFI Group (www.cfgroup.com) turns "voice of the customer" survey data into customer satisfaction improvement strategies.

Questions regarding the Survey can be directed to School/Community Relations at 248. 489. 3349.

Teacher and administrator evaluations

Teacher and administrator evaluation is not new in Farmington Public Schools (FPS), however the advent of recent State legislation, approved July 19, 2011, requires the District to implement a teacher and administrator evaluation system that includes numerous new components as outlined in the legislation.

The State of Michigan recently approved HB 4627 which requires that all teacher and administrator evaluation systems include student growth as a predominant factor, demonstrated pedagogical skills, classroom management, the attendance and discipline record of the teacher and administrator, special accomplishments and contributions, and relevant special training, among other things.

These evaluations are to be conducted annually and must result in a rating on a four factor scale: Highly Effective, Effective, Minimally Effective, or Ineffective.

While the legislature established new thresholds for evaluations, they did not provide a framework within which to accomplish the work. The legislature did charge a committee, the Governor's Council on Educator Effectiveness, with developing a statewide model, however, it will not be completed until next spring, yet the evaluation requirements are effective for the current school year. As a result, it has fallen

upon each school district to establish its own operating model.

Here in FPS, teachers and administrators learned together and have established a number of work groups to divide and conquer the work of developing an evaluation system that will go into effect in 2012-2013 and over the course of three years will ramp up the student growth component from an initial 25% to a final mandated requirement of 50% of the evaluation. Teachers and administrators met on November 8, 2011 at North Farmington High School's Auditorium to hear attorney Barb Ruga explain the State's new legislation and the impact it has on teacher evaluation. Additionally, the District requested the help of

teachers and administrators to develop the new evaluation system. More than 200 teachers and administrators volunteered to participate in the task teams aligned with this work.

The task teams will be meeting throughout the year and have committed to completing their work prior to May 1, 2012. The first task teams have already started their work and expect to conclude their work prior to the school break in December. Additional task teams will convene in January, completing their work in late March or early April. The Board of Education will receive recommendations from the task teams in May 2012 with a goal of adoption and training for implementation prior to the end of the school year.



Kenbrook Elementary School teachers Katbrine Olenczuk, Loretta Hines, Melissa McDermid, Kara Connell recently participated in teacher evaluation task teams.

Zangle/Parent Connect Report Cards

Parent Connect is an informational resource made available to every family.

This resource provides information about your child's grades, report cards, attendance, class schedule, immunization records, and includes the balance on his/her nutrition services account. Parent Connect provides a safe, secure and easy access to your child's school record.

In making the transition to Parent Connect, one change is that report cards will now be viewed online. On

December 12, 2011 your child's report card will be available to view in Parent Connect. Simply login to Parent Connect (www.farmington.k12.mi.us/parentconnect/index.php) with your PIN and password, select a student, then click on the "marks" tab on the left hand side if your child is in middle school or high school. Click on "standards" if your child is in an elementary school. If your child is in an upper

elementary school, both the "marks" and "standards" tab will have report card information. No matter what grade level your child is in, you will be able to save or print a copy of the report card from these screens. If you do not have your Parent Connect PIN/Password information, please contact the main office of your child's school. Note: the "marks" tab will not appear on Parent Connect until Monday, December 12, 2011.

Awards and Achievements

Former **Gill Elementary teacher, Maria Blanco**' entry in 2011 ArtPrize "El Pasaje" is on display at San Chez Bistro and Cafe in Grand Rapids. Maria left her position as an art teacher with Farmington Public Schools to spend eight months working with the DREAM (Dominican Education and Mentoring Project).

National Merit Semi-finalist in the 57th Annual National Merit Scholarship Program: **Laura Kincaide, Farmington High School, Laura D. Meyer, Farmington High School, Alec R. Ramsay-Smith, Harrison High School, Rishi M. Zaveri, Harrison High School, Jacob A Bur, North Farmington High School.** These students entered the program by taking the 2010 Preliminary SAT/National Merit Scholarship Qualifying Test. They will now continue in the competition for National Merit Scholarships.

Lanigan Elementary School took part in a national attempt to set a reading record October 6, 2011. This year's book was Anna Dewdney's "Llama, Llama Red Pajama."

East Middle School teachers Dena Shamami and Randall Wright were surprised with an Office Max donation of classroom supplies and flowers as part of the company's "A Day Made Better Program." Winners are chosen randomly from a list of schools in the area.

Hillside Beautification Award - Hillside Elementary School won the city of Farmington Hills' Beautification Award for all of the students' hard work for the past year with Hillside's entrances and grounds.

Farmington High School economics teacher Kathy Gustafson won the Michigan Council on Economic Education (MCEE) 2011 Economic Educator of the Year award.

The **Harrison High School Varsity Football Team** made *Sports Illustrated's* top ten high school football teams to watch - August 22, 2011 Issue

CHAMPIONS



The **North Farmington High School Boys' Soccer Team** won its second consecutive city championship.

Farmington High School's Varsity Pom Pon Team won first place for the third consecutive year at the Mid American Dance and High Kick State Championship.

Farmington High School's Girls' Volleyball Team earned its second straight Farmington Public Schools' championship. It was their fourth city title in six years.

The **North Farmington High School Girls' Swim Team** took second place in the OAA Blue Division.

Farmington High School marching band members (left) and Harrison High School marching band members (right) accept their competition trophies.



Photos provided by: Kat Petersen/farmington-mi.patch.com

Farmington High School Marching Band, under the direction of Mike Steele, and the **Harrison High School Marching Band**, under the direction of Joel Yoder and Peggy Babcock, competed on Saturday, November 5 at the Michigan Competing Band Association Championship Contest at Ford Field in Detroit. Both bands competed in Flight II, Harrison High School took fourth place and Farmington High School took ninth place.

SAVE THE DATE



Early Childhood
Open House
**Saturday,
March 3**
11 a.m. - 1 p.m.

**Farmington
Community School
Early Childhood Center**
30415 Shiawassee Street,
Farmington Hills
248.489.3373

**Alameda
Early Childhood Center**
32400 Alameda Street,
Farmington Hills
248.489.3808

SAVE THE DATE

Kindergarten
Registration
March 5-9, 2012

Kindergarten
Orientation
**Friday,
May 4, 2012**

Farmington
PUBLIC SCHOOLS



PTA Council Meeting Dates 2011-2012

Monday, February 6

Monday, May 7

Meetings begin at 7 p.m. at the Ten Mile Building, 32789 W. 10 Mile Road, Farmington Large Group Meeting Room

UPCOMING PARENT FORUM

Monday, February 13

Parent Forum - "Health Fair"

Co-hosted by Beechview, Forest and Wood Creek Elementary Schools

Warner Upper Elementary School
30303 W. 14 Mile Road,
Farmington Hills
7 p.m.

PTA Founder's Day Dinner

at Glen Oaks

Monday, February 27, 2012

6:30 - 9 p.m.

Battle of the Middles

Shots will fly as the battle between North versus South takes place at the Seventh Annual Battle of the Middles Charity Basketball Game Friday, December 16. This court battle pits the staff of Warner Upper Elementary School and Dunckel Middle School against the staff of Power Upper Elementary School and East Middle School to help raise money, food and toys for Farmington area families in need.

This year's "battle" will take place at Farmington High School, 32000 Shiawassee, Farmington. Doors open at 5:45 p.m. Tickets are \$5 for adults and \$3 for students, or \$1 with two canned goods or free with a new unwrapped toy. Proceeds will benefit the Farmington/Farmington Hills Neighborhood House and Farmington Area Goodfellows.



Financial Report receives high marks

Farmington Public Schools is pleased to report our year-end financial results for the 2010-2011 fiscal year, which ended June 30, 2011.

Taxpayers and residents of Farmington Public Schools, have a vested interest in the financial condition of the District and how tax dollars are used. For the 13th year in a row, the District has received the Certificate of Excellence in Financial Reporting from the Association of School Business Officials (ASBO). This award indicates that the District's financial statements meet or exceed ASBO's criteria for full and expanded reporting.

The District ended the year financially on track and was issued an unqualified opinion by independent auditors, Plante & Moran, PLLC. This unqualified opinion means that our financial statements present fairly the financial position of the District at year-end. For the

labeled debt. The Statement of Activities matches expenditures with program revenue and shows which resources are used to fund the overall operations of the District. The District's Comprehensive Annual Financial Report is available at the public libraries in Farmington and Farmington Hills and on the District's web site.

For tax year 2010, the District's tax rate was 12.0278 mills plus six mills for education that goes directly to the State. This represents a decrease of 46.20 percent from the rate paid in 1994 prior to Proposal A. This rate also includes the 2.10 mills levied for debt for the 1997 bond issue, as well as the 2004 bond issue to fund the outdoor

costs. The State Legislature also provided a one-time incentive payment for implementing certain best practices. The District has qualified for this additional \$100 per pupil by meeting four out of five best practices criteria. These two one-time payments total approximately \$3.0 million.

It is imperative that the District closely monitor the State's financial condition because of the number of real estate foreclosures the State continues to experience, which have a significant impact on taxable values. Taxable values of properties are projected to continue to decline and will have an impact on tax collections as well as State revenue for the State

For the 13th year in a row, the District has received the Certificate of Excellence in Financial Reporting from the Association of School Business Officials (ASBO).

year ended June 30, 2011, the District's fund balance stood at \$27,973,089 or 19.50% of expenditures. As Plante & Moran, PLLC points out, this fund balance, or reserve, would support the District a total of 35 instructional days if revenue were curtailed.

Revenues for 2010-2011 were \$148,113,209 and expenditures were \$143,432,291. Salaries and benefits of staff comprise 87.4% of the general fund expenditures with all other expenses including supplies, purchased services, and capital outlay accounting for the remaining expenditures. Revenues exceeded expenditures by \$4,680,918.

The June 30, 2011 financial statements have been prepared under the GASB Statement No. 34 format. This financial format requires the District's Financial Report to include a Statement of Net Assets and a Statement of Activities. The Statement of Net Assets shows the community's investment in buildings and equipment net of its re-



facilities projects at the secondary schools.

Michigan schools are dependent upon the State for about 50.6 percent of their revenue for day-to-day operations. The State's School Aid Fund budget for fiscal 2012 currently includes a \$470 per pupil reduction. This was a permanent reduction or rebasing of the foundation allowance. In addition to this reduction, the retirement rate has increased from 20.66% to 24.46% for 2012 and is projected to go as high as 27.37% of wages for fiscal 2013. The amount of \$470 plus this increase in retirement equates to a loss of approximately \$8.5 million in funding to Farmington Public Schools. The legislature has approved a few one-time incentive payments for fiscal 2012. The District qualifies to receive approximately \$160 per pupil to help offset the steep increase in retirement

Education Tax in the future. This information does not paint an optimistic picture for school finance in the State of Michigan. We continue to be on red alert with our state funding situation. There is reason to be concerned and watchful about the future.

The District's financial health requires that the District continue to be vigilant in balancing the budget annually, while still maintaining the quality instruction our children deserve. For the past several years, our budget process has included ways of increasing revenue sources, examining operational efficiencies and looking at cost reductions. Public schools are an investment we make for a strong nation. The Farmington Board of Education and staff will continue working hard to provide educational excellence and equity for all students within available resources.

General Fund Comparative Balance Sheet

	2011	2010
ASSETS:		
Cash/		
Equivalent Investments	\$32,029,579	\$32,349,397
Taxes Receivable	62,000	62,000
Interest Receivable	61,866	97,696
Accounts Receivable	49,582	269,327
Due from Other		
Governmental Units	17,153,882	19,040,134
Due from Other Funds	1,421,684	-
Other Assets	2,201,374	2,201,526
Total Assets	\$52,979,967	\$54,020,080
LIABILITIES:		
Accounts Payable	\$1,716,803	\$1,176,128
Accrued Payroll	18,038,304	18,820,896
Due to Other Funds	4,205,097	6,607,990
Due to Other		
Governmental Units	550,703	-
Deferred Revenue	495,971	4,122,895
Total Liabilities	\$25,006,878	\$30,727,909
FUND BALANCE:	\$27,973,089	\$23,292,171
TOTAL LIABILITIES & FUND BALANCE	\$52,979,967	\$54,020,080

2010-2011 District Information

Taxable Valuation-Non Homestead	1,395,270,078
Taxable Valuation-Homestead	2,213,224,752
Taxable Valuation-Commercial	
Personal Property	146,933,020
Taxable Valuation-Industrial Personal Property	86,967,220
TOTAL	3,842,395,070

Fourth Friday K-12 Students (FTE's)	11,567
Taxable Value Per Student	\$332,186
Foundation Grant Per Student	\$10,195

*Excludes County Special Education Center Program Students

Staff		
Professional Teaching Staff	803	
Administrators	37	
Support Staff Supervisors	25	
Food Service	61	
Maintenance/Operations	94	
Office Employees/Paraprofessionals	309	
Transportation	89	
TOTAL STAFF	1,418	

2010-2011 Teacher Salary Schedule

	Minimum	Maximum
BA	\$40,109	\$73,808
MA	\$44,745	\$85,945

General Fund Comparative Statement of Revenue and Expenditures

	2011	2010
REVENUE:		
Local	\$54,406,410	\$56,502,397
Interdistrict	407,040	318,411
State	74,955,059	71,052,316
Federal	9,221,322	10,130,724
OTHER SOURCES-Operating		
Transfers and Other Sources	9,123,378	10,109,816
Total Revenue	\$148,113,209	\$148,113,664
EXPENDITURES:		
Instruction	\$83,670,204	\$89,687,670
Support Services:		
Pupil	13,424,406	14,197,164
Instructional Staff	8,031,591	9,425,394
General Administration	1,171,050	1,265,420
School Administration	7,212,750	8,322,361
Business	2,108,472	2,299,014
Operations and Maintenance	11,974,347	13,812,130
Pupil Transportation	6,651,347	6,515,469
Central	3,202,636	3,076,546
Community Services	1,215,179	1,356,136
Athletics**	2,006,621	-
Intergovernmental Payments	73,137	215,113
Capital Outlay	1,455,112	480,989
Outgoing Transfers & Other Transactions		
Total Expenditures, Outgoing Transfers & other Transactions	\$143,432,291	\$155,594,555
Excess of Revenue and Other Sources Over/(Under) Expenditures & Other Uses	\$4,680,918	\$(7,480,891)

**In 2010, Athletics was recorded in its own fund

General Fund Statement for Fund Equity For Year Ending June 30, 2011

Fund Balance, July 1, 2010	\$23,292,171
Additions (Deductions)	4,680,918
Fund Balance, June 30, 2011	\$27,973,089
Nonspendable for Inventories/Prepays	
Committed for:	\$2,201,374
Contractual obligations - retirement and sick	2,908,431
Contractual obligations - vacation	436,928
Cash flow deficiency for 2011/12	585,520
Assigned for:	
Budgeted use of fund balance in 2011/12	7,938,987
Encumbrances	79,937
Unassigned	13,821,912
Total Fund Balance	\$27,973,089

Nutrition Services adds ingredient information for lunches and snacks

Parents can now find more detailed nutritional information for Upper Elementary, Middle and High School lunches and snacks. Ingredient information, as well as nutritional facts, ie serving size, calories, carbohydrates, fat, saturated fat, and fiber are now available.

This information can be found on the Nutrition page of the District's web site:

www.farmington.k12.mi.us/nutrition_services/

Elementary lunch and snack nutritional facts can also be found here. Ingredient information will be available in the near future.

Please be advised that this is a work in progress and if you need additional information, please call the Nutrition Services office at 248.489.3717.

Nutrition Facts

Serving Size 172 g	
Amount Per Serving	
Calories 200	Calories from Fat 8
% Daily Value*	
Total Fat 1g	1%
Saturated Fat 0g	1%
Trans Fat	
Cholesterol 0mg	0%
Sodium 7mg	0%
Total Carbohydrate 36g	12%
Dietary Fiber 11g	45%
Sugars 6g	
Protein 13g	
Vitamin A 1%	Vitamin C 1%
Calcium 4%	Iron 24%
*Percent Daily Values are based on a 2,000 calorie diet. Your daily values may be higher or lower depending on your calorie needs.	
NutritionData.com	



Farmington
PUBLIC SCHOOLS



Spotlight on Seniors

Michael Liebowitz selected as the Senior Extraordinaire Award Winner for 2011

On Wednesday, October 26, Farmington Public Schools held its 16th Annual Senior Adult Forum Breakfast at the Costick Activities Center. The Breakfast gives area seniors an opportunity to speak with District representatives about current educational issues, see student exhibits and enjoy performances by student musicians.

Farmington Public Schools also announced the "Senior Extraordinaire" Award Winner for 2011 at the Breakfast. The award honors a senior who is involved in Farmington Public Schools' educational activities and who volunteers time and talents to our students.



Michael Liebowitz, Senior Extraordinaire Award winner for 2011, is congratulated by Superintendent Susan Zurvalec.

This is the sixth year the District is naming a senior adult in our community as a "Senior Extraordinaire." Out of an outstanding pool of nominations submitted by folks throughout the District, this year the honored guest was Michael Liebowitz.

Mr. Liebowitz volunteers nearly every day in the media center at North Farmington High School helping both students and staff in many ways. In addition, Mike has hundreds of hours of volunteer service in the school's band program.



Along with his gift of time given to North, he has also donated thousands of dollars to North projects such as scholarships for band camp, a new scanner for the library, and providing the final dollars to start the outdoor classroom project with the World Trade Center Sculpture.

Former North Farmington High School principal, Rick Jones, states "This remarkable man, so quiet and humble, will really hate this attention today, but you need to know that he is also brilliant, having been an aerospace engineer... he truly is a rocket scientist! And, although volunteering in the media center is far from the thrill of launching a Saturn rocket, it is just as important in that it allows us to take off every day, with the confidence that our students are well served."

Liebowitz joins the following past winners: 2005: Demeetra and Toula Mehas and the late Tina Mehas, 2006: the late Leona Geotzke, 2007: Lincoln Avery, 2008: Virginia Starr, 2009: Allan Whittemore and 2010: Diane DeSousa.

Senior Adult Card

Did you know that Farmington/Farmington Hills senior adults (60 and over) are eligible for discounts for student performances and sporting events (excluding hockey)? A Farmington Public Schools' Senior Adult Card is all you need. Please call the School and Community Relations department at 248-489-3349 or pick one up at the Administration Building; 32500 Shiawassee, Farmington. Senior Adult Cards do not expire. If you have a card, there is no need to request a new one.

		Senior Adult Card
<hr/> Name		
Complimentary Pass		
		Susan H. Zurvalec, Superintendent
NO EXPIRATION DATE		

FARMINGTON PUBLIC SCHOOLS EARLY CHILDHOOD PROGRAMS

Discover all that your public schools have to offer you and your preschooler!

- State Aligned Curriculum
- Social and Emotional Development
- Intellectual Development
- Language and Early Literacy Development
- Creative Development
- Physical Development and Health
- Early Learning in Mathematics
- Early Learning in Science
- Early Learning in Social Studies
- Early Skills in using Technology
- KinderReady
- Kinder 3's Full Day
- Parent Tot Class
- 1/2 Day or Full Day Four-year-olds
- Two-, Three-, and Four-year-old Preschool
- 7:15 a.m. – 6 p.m. Programs

Farmington Community School Early Childhood Center

30415 Shiawassee Street, Farmington Hills
248.489.3373

Alameda Early Childhood Center

32400 Alameda Street, Farmington Hills
248.489.3808

For Early Childhood/Preschool registration and curriculum information, visit our web site at www.farmington.k12.mi.us/district/ecc/

NO RESIDENCY REQUIREMENTS For Tuition-based Programs

FREE* Grant programs available
Head Start and state-funded preschool
(*must meet eligibility requirements)

State licensed and credentialed teachers and assistants

State licensed and nationally accredited facilities



Start Young,
Finish Strong!

School Closing Information

When inclement weather occurs, please tune in to the following media outlets for school closing information:

Radio

WJR (760 AM)
WWJ (950 AM)
Q95 (95.5 FM)
WMGC (105.1 FM)

Television
Channels 2,4,7, and 10

Web Site
www.farmington.k12.mi.us

School Info Line
248.489.3337

Parents are discouraged from calling radio or television stations, the police or school officials when weather dictates a cancellation.



UpDate is a newsletter for Farmington Public Schools' residents. It is published four times during the school year by the School/Community Relations Department. Comments and suggestions are welcome. Please visit www.farmington.k12.mi.us or call 248.489.3349.

Superintendent
Susan H. Zurvalec

Board of Education
Sheilah P. Clay, President
Karen L. Bolsen, Vice President
Priscilla L. Brouillette, Secretary
Frank L. Reid, Treasurer
Deborah L. Brauer, Trustee
George E. Gurrola, Trustee
Howard I. Wallach, Trustee

Editors
Diane Bauman
Director, School/Community Relations
diane.bauman@farmington.k12.mi.us

Gail Green
Communication Specialist
gail.green@farmington.k12.mi.us

Lynne Meyer
Communication Specialist
lynne.meyer@farmington.k12.mi.us

Visit us on
[facebook](#)

Visit us on
[twitter](#)

